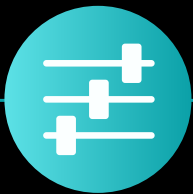


SoulCraftAI Learning Community



Master AI at Your Own Pace



Learning

Bi-weekly AI workshops, access to prompt and command libraries, and video tips for skill building.



Value

Continuous GPT learning, discounted sessions, custom AI support, and savings on tailored solutions.



Community

Regular AI updates, private Q&A group, and exclusive Whatsapp community access. Get tips and ask questions daily.

About this program

Embark on an inspiring journey with Chat GPT at your side.

SoulCraftAI is not merely a course; it's a transformative path designed with coaches, consultants and service providers in mind. We guide you in seamlessly weaving AI into your programs, invigorating your service delivery with unmatched flexibility and cutting-edge innovation. Our program is crafted to ensure you're never swamped with information. Instead, you'll evolve alongside the program, steadily mastering the art of ChatGPT to elevate your practice.



0413 021 389

Email : bizualize.consult@bizualize.com.au
Web: www.bizualize.com.au

learning



The learning curve with SoulCraftAI is a journey of continuous discovery and skill enhancement.

Twice each month, you're invited to participate in interactive, insightful workshops conducted via Zoom, designed to deepen your understanding and application of AI in your field.

Gain unrestricted access to an expansive library of carefully curated prompt ideas and command guides, along with a treasure trove of video tips.

You will have unrestricted access to an AI expert to ask questions, get answers and receive daily tips.

Value



With SoulCraftAI, you'll open new horizons in your professional journey by integrating advanced AI learning into your practice.

The SoulCraftAI program offers you an ongoing educational experience with Chat GPT technology, tailored to your unique consulting and coaching needs.

Plus you'll also benefit from significant discounts on individual sessions and custom solutions, ensuring you get the most value for your investment.

SoulCraftAI support is more than just assistance; it's a partnership in innovation, designed to elevate your service delivery to new heights of excellence and efficiency.

Community

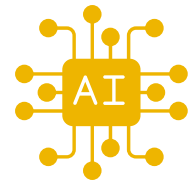


Being part of the SoulCraftAI community means more than just having access to new features; it's about being part of a dynamic, forward-thinking network of professionals.

Our private Q&A group offers a space for in-depth discussions, problem-solving, and sharing insights with peers, mentors, and industry leaders.

The community extends to social platforms like Facebook and LinkedIn, where you can connect, collaborate, and grow with like-minded professionals.

This is a community that thrives on mutual support and collective advancement in the realm of AI integration in coaching and consulting.



\$100/month (no commitment)

A SoulCraftAI Membership includes the following benefits:

Exclusive SoulCraftAI live Chat Group

Ask your questions and get answers on our members only chat group. You will also receive regular tips, tricks and tutorials and be kept up to date with what's happening in AI. It's like having your own AI consultant on call!

Bi-Weekly Q&A sessions

Join the community for an hour long video call each Friday at 2:00pm. We'll discuss the challenges members are facing and you'll get advice and guidance on how to overcome your issues with ChatGPT.

Weekly Q&A Submissions

Submit your challenges and questions and we'll make sure to cover them in one of the bi-weekly Q&A video sessions

Monthly one on one video consultation

*Receive a monthly 30 minute one on one session where you will receive personalised help and support to assist **Valued at \$75+GST***

SoulCraftAI Tips and Tricks

Get access to a library of video tutorials covering basic fundamentals through to advanced tips designed to help you get the most out of ChatGPT. We'll also give you handy tips on using AI not strictly related to ChatGPT.

Access to pre-build Custom GPTs you can use

Get access to a library of pre-built custom GPTs that you can use in your own business. Use them as is or change them and make them your own in your monthly one on one.

REGISTER NOW!